

# The Martin Band Instrument Co.

## Committee Trumpets

Elkhart, Indiana

1940 – c.1965 / c.1972 – c.2004

Martin introduced the Committee model trumpet in 1940 to replace the Imperial as the top model in the Martin lineup. Serial numbers for these start around 135000. These turned out to be the most popular model ever produced and are still highly collected today.



**JIMMY NEILSON**, Band Director and Instrumental Instructor, Oklahoma City University—an outstanding trumpet and cornet artist. Member of the Committee.



**M. THOMAS COUSINS**, National Symphony Orchestra, Washington, D. C. A real artist and one of many recent converts to Martin.



**RAFAEL MENDEZ**, phenomenal Hollywood Artist—featured on the Al Pearce program and others. Plays the Committee Martin Trumpet—and how!



**DANA GARRETT**, formerly cornet soloist of the Sousa Band—now first trumpet, Capitol Theatre, Washington, D. C. Member of the Committee.

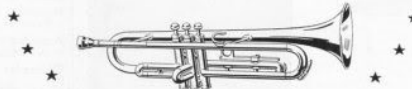


**REN SCHILKE**, one of the most highly skilled artists in America, first trumpet with the Chicago Symphony Orchestra. Member the Committee.



**CHARLIE SPIVAK**, rated "top" by everybody who knows—now heading his own fine combination. Member Committee.

### *Only Martin would do it* **THE COMMITTEE TRUMPET**



WHO ELSE but Martin would spend the countless days, effort and dollars to finally produce a trumpet which this Committee of fine professional players all agree is the best ever? Samples sent to a few large cities for pre-testing by prominent players and teachers, were not only approved but were immediately purchased and more ordered. Over 500 have already been sold even though this is the first general announcement. We point to no trick gadgets or devices on the horn. It's also-

gether a matter of how it plays and what comes out of the bell. As one Chicago trumpeter writes, "It plays as if it wants to play itself." Every enthusiastic owner will tell you that you should try the new "Committee Model" Martin Trumpet NOW! You'll find it the thrill of your life. See the nearest Martin dealer or drop us a card!

**MARTIN**  
BAND INSTRUMENT CO.  
Dept. 1203 Elkhart, Indiana

Of all the men listed on this “Committee”, the only one who was really a designer and builder was Renold Schilke. He had to have been the real mind behind it, and he did claim this later in life. The others listed were performers who probably were asked to test them and give their input.

Another source I found said that the Committee included Renold Schilke, Vincent Bach, Elden Benge, and Foster Reynolds. So far, there has been no proof of this and the idea that competitors would help you design a trumpet would seem unlikely. Bach was in New York selling his own trumpets, Reynolds was in Cleveland having just started his own company a few years prior, and Benge had just started his own business in 1939. It’s possible Benge did give Schilke some advice, since they were friends, but he would have been very busy.

Here is a quote from trumpet player Wallace Roney. “I met Mr. Schilke through John Faddis. He told me that he was the one who designed the Martin Committee in 1939 and proceeded with the horn into the 1960s. He also believed his Schilke horns had improvements on the Committee design. And believe me, in 1981, he was still extremely proud of those horns.”

#### Martin Committee Ad from 1941



*Just Between*  
**YOU AND ME...**

"If I were a music dealer, there's just one line I'd want above all others. That's Martin. The boys in the big-name bands who play them, say the Committee model Saxophones, Trombones, Trumpets, and other instruments in the Martin line are tops. And they should know. No matter what any other manufacturer does, Martin always seems to be one jump ahead. How any dealer, alert to opportunity, could handle any other line but Martin, is beyond me."

**MARTIN** BAND INSTRUMENT COMPANY  
ELKHART, INDIANA

**Committee Trumpet #136xxx c.1940**



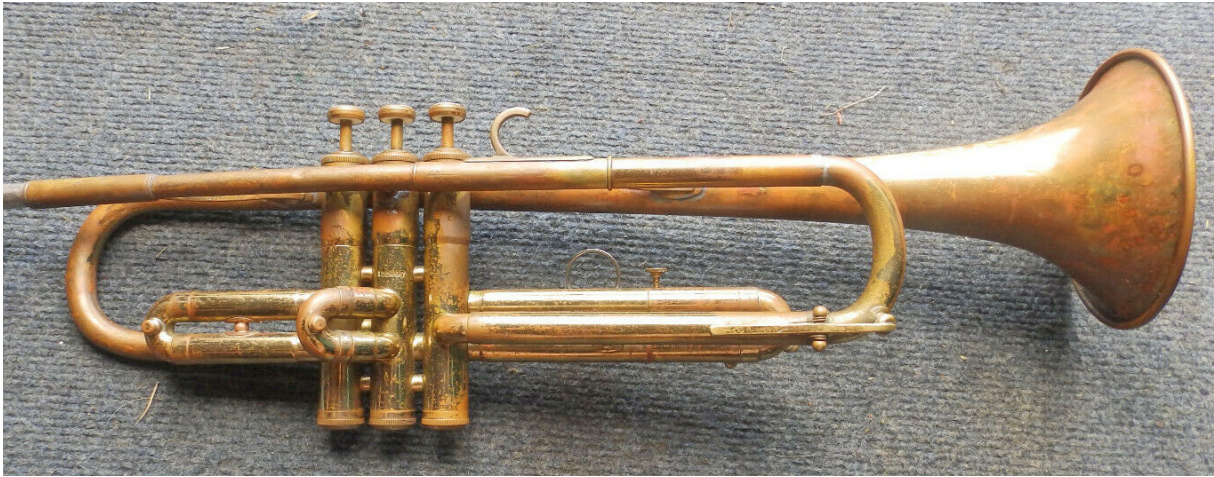
**Committee Trumpet #137xxx c.1940**



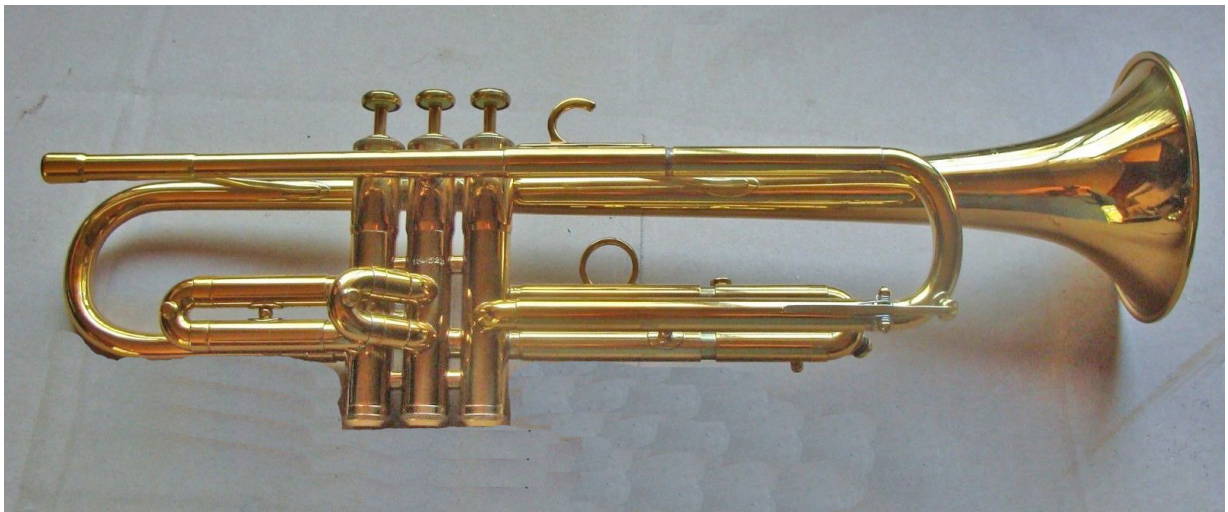
**#140xxx c.1940**



**#151xxx c.1945 – now with horizontal water keys**



**#154xxx c.1946**



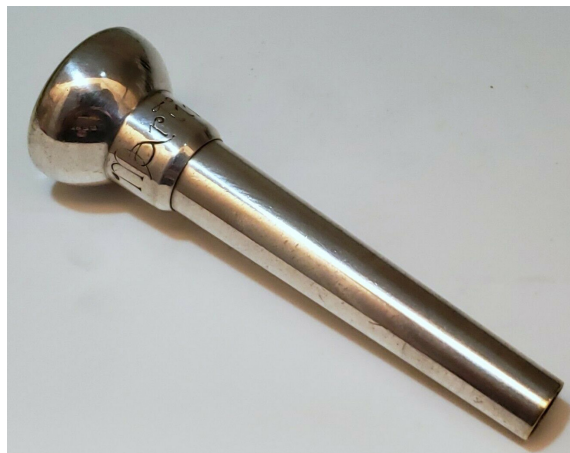
**#165xxx Committee Deluxe c.1948 with nickel silver tubing**



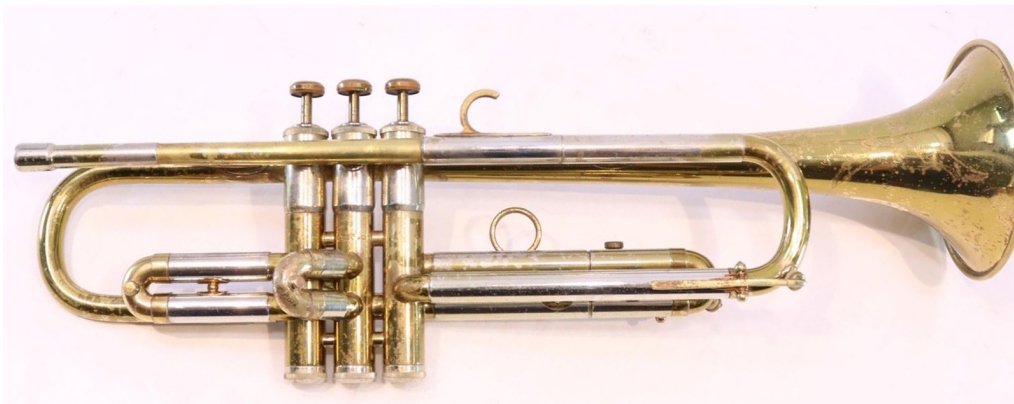
1948 Catalog Illustration



Here is an example of the mouthpieces that came with the Committee in 1948. I have seen one of these with a Dizzy model as late as 1961.  
#8 has a medium cup & rim / #10 has a shallow cup & cushion rim



#172xxx Deluxe c.1950



**#189xxx Deluxe Committee c.1955**



**#196xxx Deluxe Committee c.1957**



**#203xxx Committee c.1959**



**Martin introduced the Custom Committee model some time between the January and August 1959 price lists. Examples found start at around #204000.**

**RMC buys Martin on 12/30/1960 and starts adding their mark at serial #210800.  
#211xxx Deluxe model c.1961 – now part of RMC**

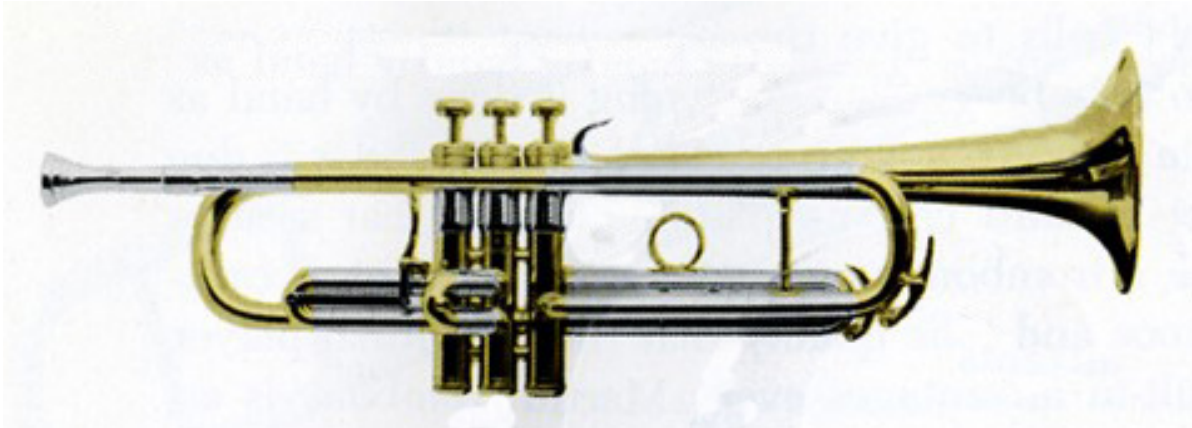


**#217xxx Dizzy Gillespie Deluxe Committee model c.1963**

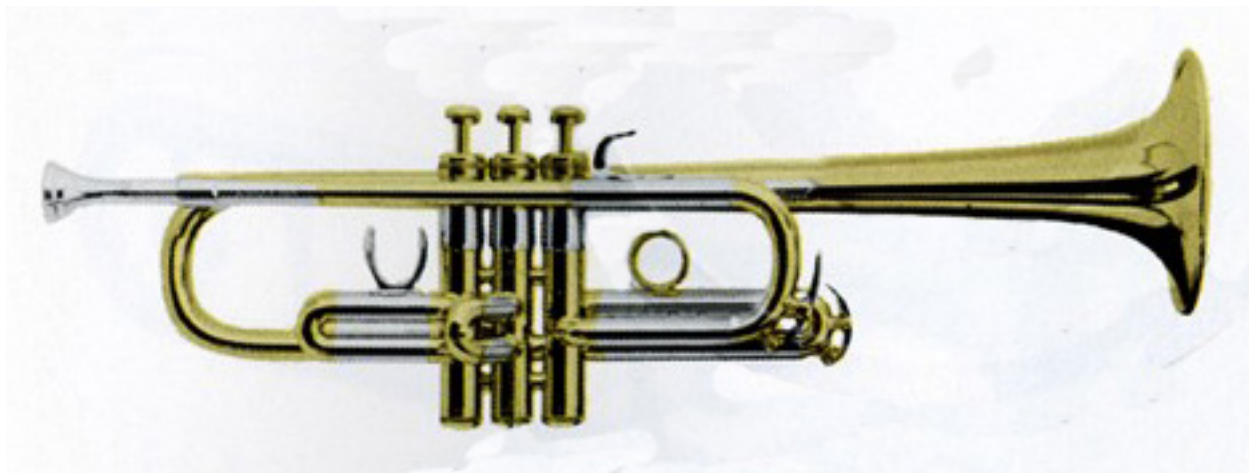


Here is the 1962 lineup of Custom Committee models available.

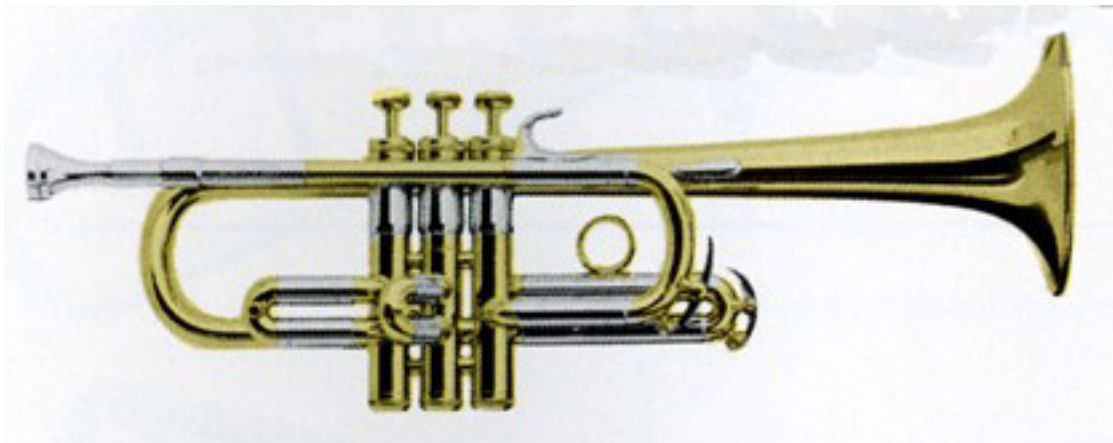
**TU 05 Custom in Bb**



**TU 06 Custom in C**

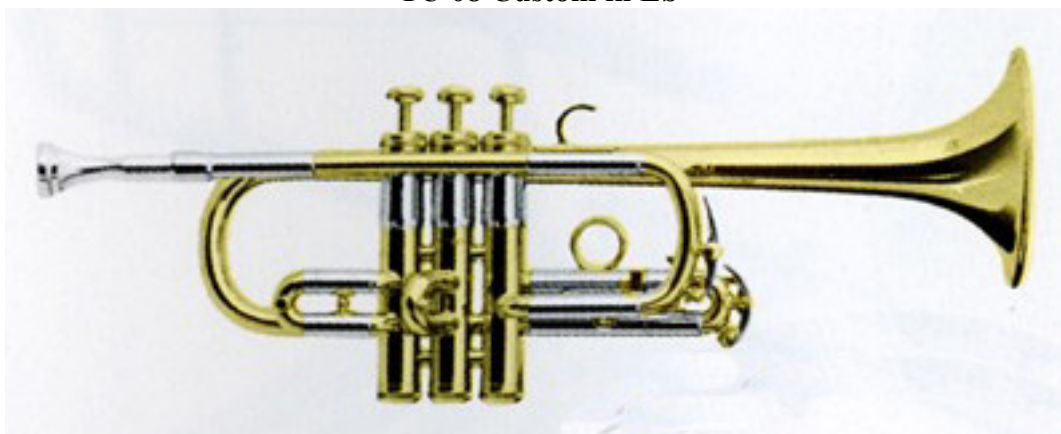


**TU 07 Custom in D**





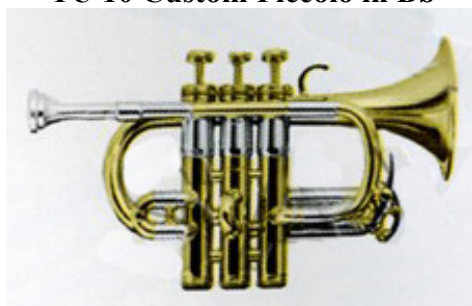
**TU 08 Custom in Eb**



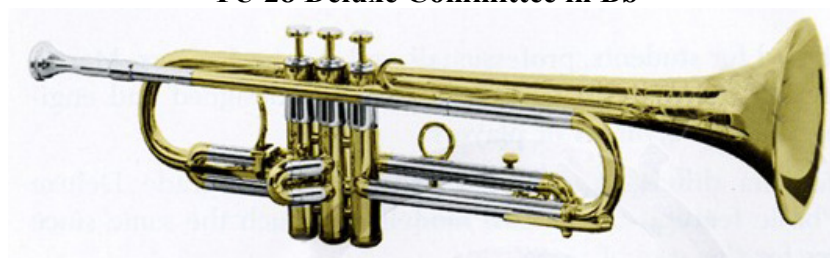
**TU 09 Custom in F**



**TU 10 Custom Piccolo in Bb**

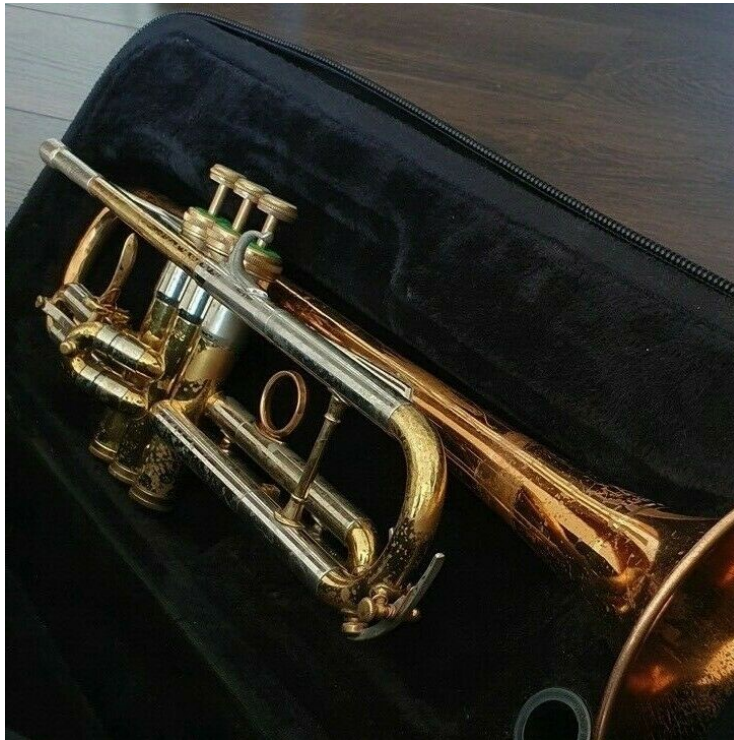


**TU 28 Deluxe Committee in Bb**



**Martin was sold to Wurlitzer after the RMC bankruptcy on June 26, 1964 and switched to 700000 serial numbers not long after; although there are a few non-RMC instruments with serial numbers just under 220000. The last example of a Committee found is #706577 from c.1965. After this there are Magna and Deluxe models.**

**Here is a TU05 Custom model #2077xx c.1960 that matches the 1962 image above. It does not have the Committee name on the bell and comes with a rose brass bell and 0.460" bore.**



**This also matches one of the first Magna models below with no RMC logo and serial #2198xx from 1964. The RMC mark disappears right around 219000 so this may date to mid-1964 when Wurlitzer takes over. Receiver is stamped "TU05" and it has a 0.460" bore. (author's photo)**



**#711xxx Deluxe model c.1966**



**Wurlitzer closed the Martin factory in October 1969 and trumpet production ended. The name was sold to Leblanc in 1970.**

**Leblanc made a few Committee model trumpets in the mid-1970s for performers like Dizzy Gillespie and Miles Davis. These used the original tooling except for the missing bell mandrel; for which they used a backup one.**

**#5453xx**



#5511xx from mid-1970s



**In the late 1970s, Leblanc started developing an all-new Committee trumpet designed by Larry Ramirez with input from Wallace Roney. Schilke met Ramirez at a convention in about 1980 and told him that he had messed up his original design.**

**Miles Davis's Committee from c.1980 with black lacquer and gold-filled engraving.  
Model T3460**



#5761xx c.1980



#8949xx model T3460



Leblanc announced in 2004 that they had recently measured jazz trumpeter Chris Botti's vintage Committee model and planned to produce a copy of it. Martin was sold to Steinway in 2004 and all production ended in Elkhart and Kenosha.

In 2008, Conn-Selmer ended all production of Martin instruments, which by then were outsourced. In 2021, great-grandson Richard Martin revived the Martin Committee name with production by BAC in Kansas City.